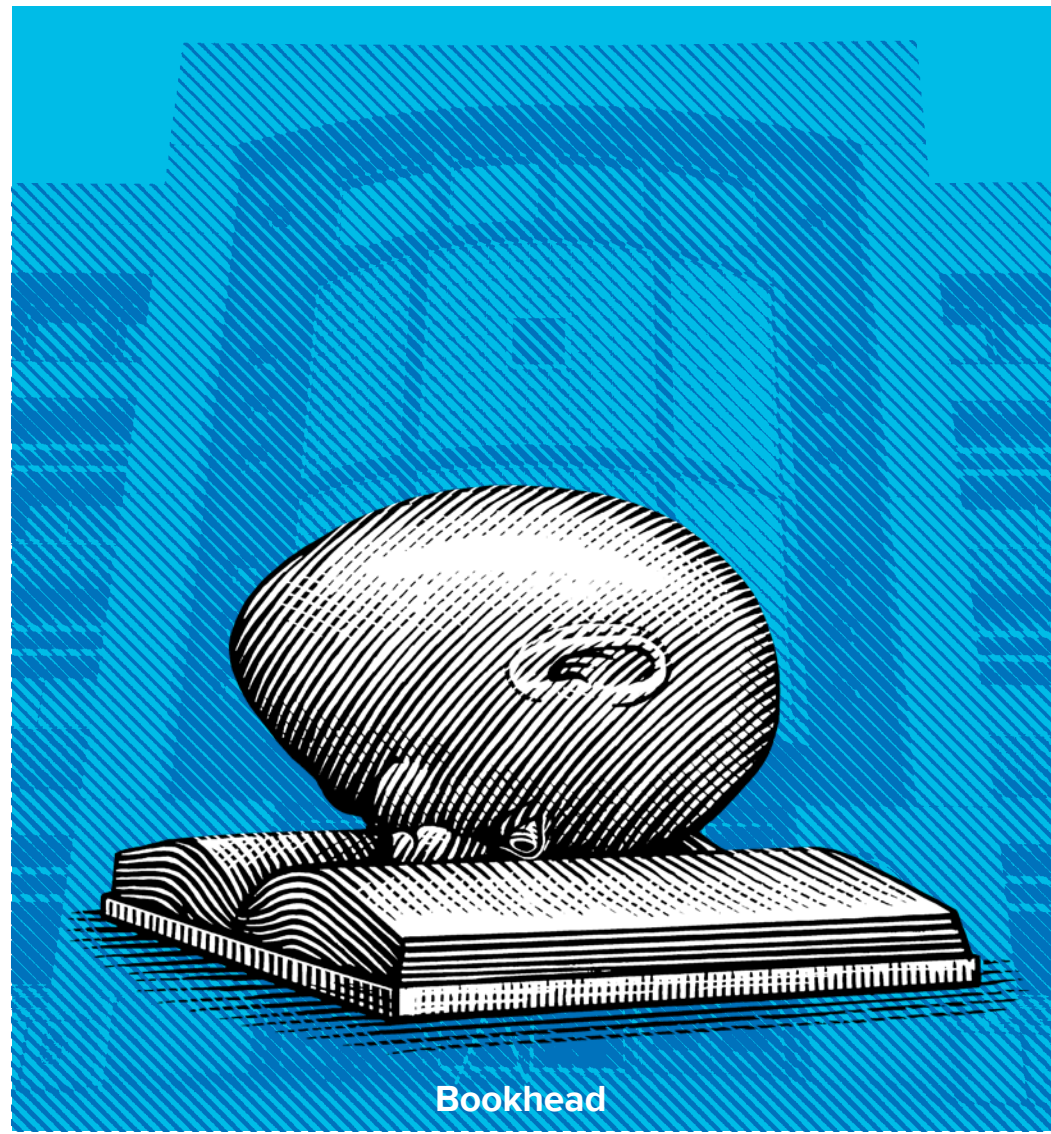


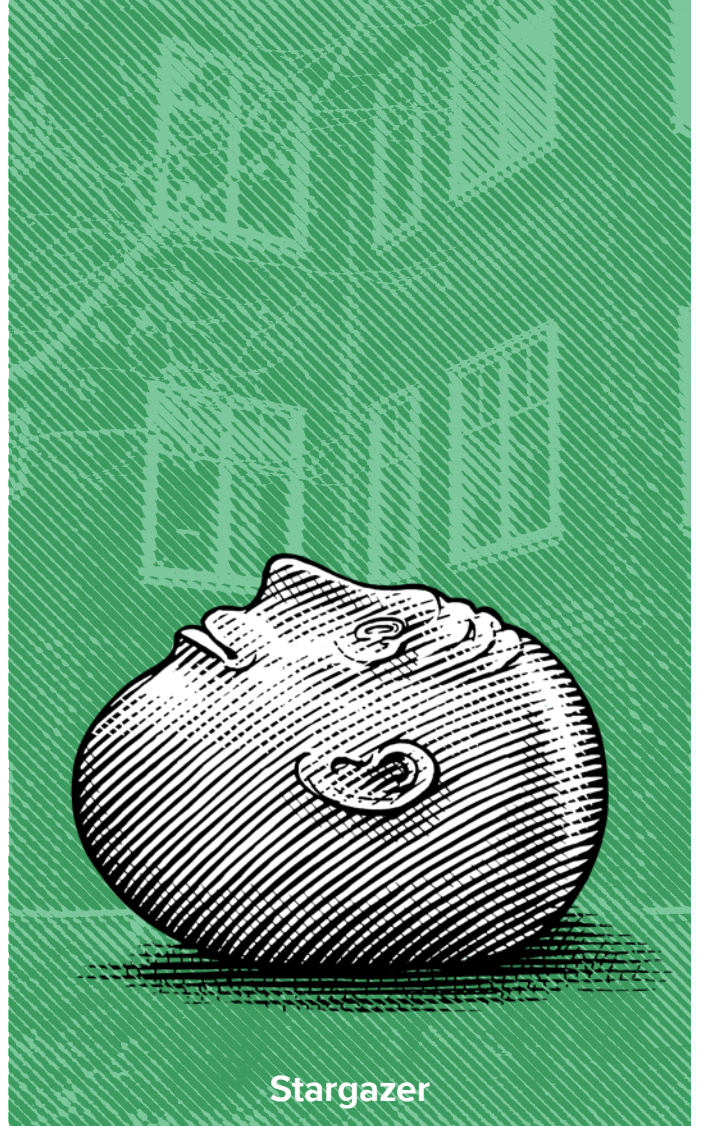
# UC DAVIS 2024-25



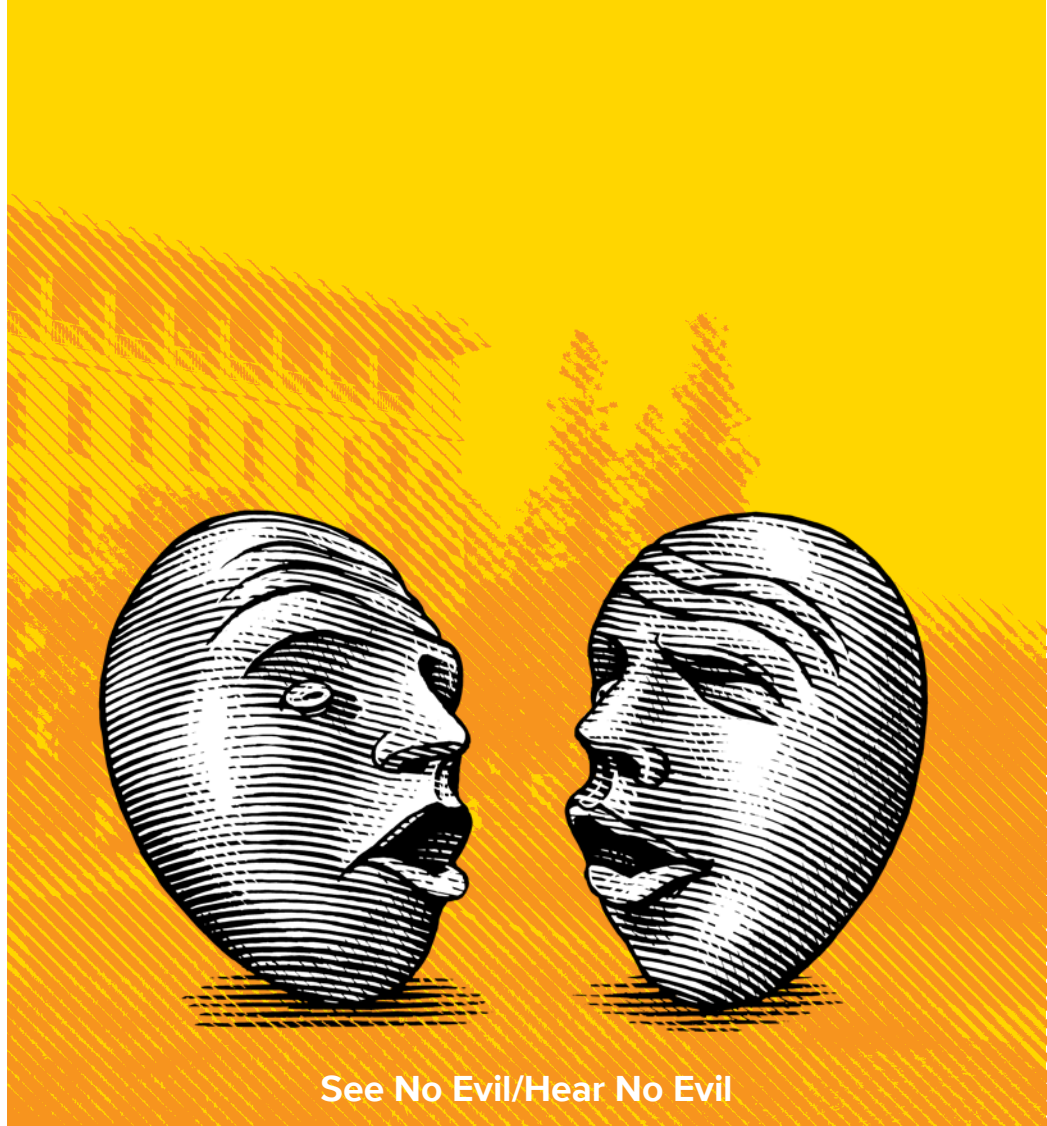
Eye on Mrak (Fatal Laff)



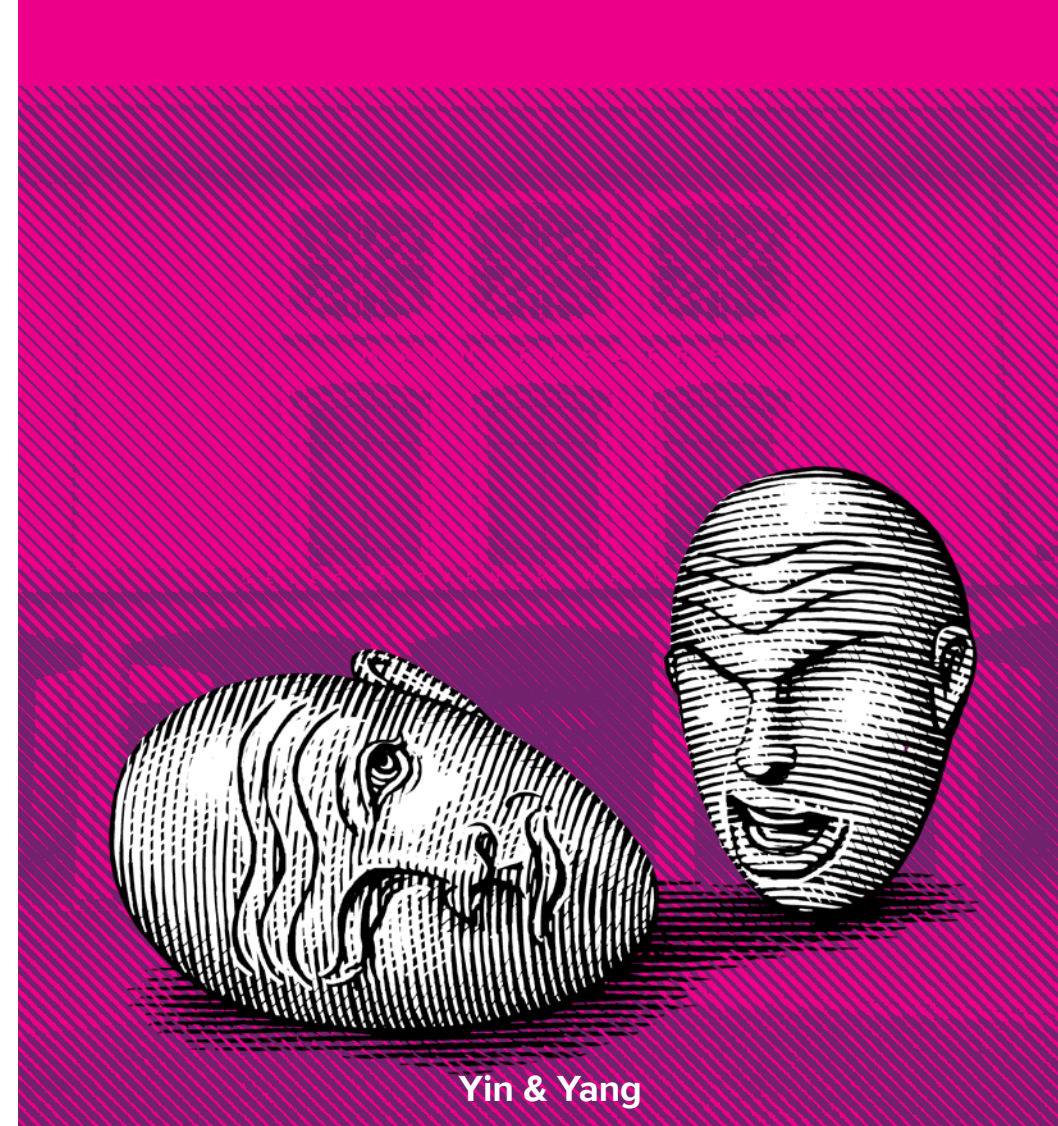
Bookhead



Stargazer



See No Evil/Hear No Evil



Yin & Yang

## UC Davis Eggheads

eggheads.ucdavis.edu

**Celebrating the Year of the Eggheads**

The UC Davis Eggheads is a popular art series made up of five bronze sculptures — *Bookhead*, *Eye on Mrak (Fatal Laff)*, *Stargazer*, *Yin & Yang*, and *See No Evil/Hear No Evil*. They were created by renowned artist and late UC Davis professor Robert Arneson and installed on campus between 1991 and 1994.

On April 1, 2024, UC Davis launched the "Year of the Eggheads" (ending April 2025). It not only celebrates Arneson's Eggheads but also encourages learning about all the art and artists of UC Davis. Look for the Arneson Egghead Collection of licensed products including limited-edition apparel, accessories and more. And make some time in your busy schedule to enjoy all the culture our university has to offer.

### September

| S  | M                      | T  | W  | T  | F  | S  |
|----|------------------------|----|----|----|----|--|
| 1  | 2<br>Labor Day holiday | 3  | 4  | 5  | 6  | 7<br>Football v. Texas A&M in Commerce, UC Davis Health Stadium  |
| 8  | 9                      | 10 | 11 | 12 | 13 | 14<br>Summer Session II ends<br>Football away, Southern Utah   |
| 15 | 16                     | 17 | 18 | 19 | 20 | 21<br>Football v. Utah Tech, UC Davis Health Stadium   |
| 22 | 23                     | 24 | 25 | 26 | 27 | 28<br>Fall quarter begins<br>Fall instruction begins<br>Football v. University of Idaho, UC Davis Health Stadium |
| 29 | 30                     |    |    |    |    |  |

### October

| S  | M  | T  | W  | T  | F  | S  |
|----|----|----|----|----|----|--|
|    |    | 1  | 2  | 3  | 4  | 5<br>National Disability Employment Awareness Month, Oct. 1-31<br>Sunset Fest<br>Football away, Portland State |
| 6  | 7  | 8  | 9  | 10 | 11 | 12<br>Homecoming Weekend, Oct. 9-12<br>Football v. Cal Poly Homecoming, UC Davis Health Stadium                |
| 13 | 14 | 15 | 16 | 17 | 18 | 19<br>Football away, Eastern Washington  |
| 20 | 21 | 22 | 23 | 24 | 25 | 26   |
| 27 | 28 | 29 | 30 | 31 |    |  |

### November

| S  | M                          | T  | W  | T                          | F                          | S   |
|----|----------------------------|----|----|----------------------------|----------------------------|---|
|    |                            |    |    |                            | 1                          | 2<br>Native American Heritage Month, Nov. 1-30<br>Parent and Family Weekend, Nov. 1-3<br>Football v. Northern Colorado, UC Davis Health Stadium |
| 3  | 4                          | 5  | 6  | 7                          | 8                          | 9<br>Football away, University of Montana   |
| 10 | 11<br>Veterans Day holiday | 12 | 13 | 14                         | 15                         | 16<br>Football v. Montana State, UC Davis Health Stadium  |
| 17 | 18                         | 19 | 20 | 21                         | 22                         | 23<br>Football away at Sacramento State Gateway Center  |
| 24 | 25                         | 26 | 27 | 28<br>Thanksgiving holiday | 29<br>Thanksgiving holiday | 30  |

### December

| S  | M                           | T                    | W                    | T  | F  | S  |
|----|-----------------------------|----------------------|----------------------|----|----|--|
| 1  | 2                           | 3                    | 4                    | 5  | 6  | 7<br>Fall instruction ends                   |
| 8  | 9<br>Fall finals, Dec. 9-13 | 10                   | 11                   | 12 | 13 | 14<br>Fall quarter ends<br>Fall Commencement |
| 15 | 16                          | 17                   | 18                   | 19 | 20 | 21   |
| 22 | 23                          | 24<br>Winter holiday | 25<br>Winter holiday | 26 | 27 | 28   |
| 29 | 30                          | 31<br>Winter holiday |                      |    |    |  |

### January

| S  | M                                    | T  | W                   | T  | F                          | S                        |
|----|--------------------------------------|----|---------------------|----|----------------------------|--------------------------|
|    |                                      |    | 1<br>Winter holiday | 2  | 3<br>Winter quarter begins | 4                        |
| 5  | 6                                    | 7  | 8                   | 9  | 10                         | 11<br>Winter instruction |
| 12 | 13                                   | 14 | 15                  | 16 | 17                         | 18                       |
| 19 | 20<br>Martin Luther King Jr. holiday | 21 | 22                  | 23 | 24                         | 25                       |
| 26 | 27                                   | 28 | 29                  | 30 | 31                         |                          |

### February

| S  | M                            | T  | W  | T  | F  | S   |
|----|------------------------------|----|----|----|----|---|
|    |                              |    |    |    |    | 1<br>Black History and Futures Month, Feb. 1-28 |
| 2  | 3                            | 4  | 5  | 6  | 7  | 8   |
| 9  | 10                           | 11 | 12 | 13 | 14 | 15  |
| 16 | 17<br>Presidents Day holiday | 18 | 19 | 20 | 21 | 22  |
| 23 | 24                           | 25 | 26 | 27 | 28 |   |

### March

| S  | M                                | T  | W  | T  | F                          | S                                      |
|----|----------------------------------|----|----|----|----------------------------|--|
|    |                                  |    |    |    |                            | 1<br>Women's History Month, March 1-31 |
| 2  | 3                                | 4  | 5  | 6  | 7                          | 8                                      |
| 9  | 10                               | 11 | 12 | 13 | 14                         | 15                                     |
| 16 | 17<br>Winter finals, March 17-21 | 18 | 19 | 20 | 21<br>Winter quarter ends  | 22                                     |
| 23 | 24                               | 25 | 26 | 27 | 28<br>Cesar Chavez holiday | 29                                     |
| 30 | 31<br>Spring instruction begins  |    |    |    |                            |  |

### April

| S  | M  | T  | W  | T  | F  | S   |
|----|----|----|----|----|----|---|
|    |    | 1  | 2  | 3  | 4  | 5<br>Asian American and Pacific Islander Heritage Month, April 1-30<br>UC Davis Employee Giving Month, April 1-30 |
| 6  | 7  | 8  | 9  | 10 | 11 | 12  |
| 13 | 14 | 15 | 16 | 17 | 18 | 19<br>Give Day, April 11-12<br>Picnic Day   |
| 20 | 21 | 22 | 23 | 24 | 25 | 26  |
| 27 | 28 | 29 | 30 |    |    |   |

### May

| S  | M  | T                          | W  | T  | F  | S   |
|----|----|----------------------------|----|----|----|---|
|    |    |                            |    |    | 1  | 2<br>Asian American and Pacific Islander Heritage Month, May 1-31<br>Mental Health Awareness Month, May 1-31<br>Pride Month, May 1-31 |
| 3  | 4  | 5                          | 6  | 7  | 8  | 9   |
| 10 | 11 | 12                         | 13 | 14 | 15 | 16  |
| 17 | 18 | 19                         | 20 | 21 | 22 | 23<br>Whole Earth Picnic, May 9-11  |
| 24 | 25 | 26<br>Memorial Day holiday | 27 | 28 | 29 | 30<br>Memorial Day Ceremony<br>School of Veterinary Medicine Commencement   |
| 31 |    |                            |    |    |    |   |

### June

| S  | M  | T  | W  | T                                      | F  | S                        |
|----|----|----|----|--|--|--------------------------|
| 1  | 2  | 3  | 4  | 5                                      | 6<br>Spring finals, June 6, 9-12   | 7                        |
| 8  | 9  | 10 | 11 | 12<br>Spring quarter ends              | 13<br>Graduate School of Management Commencement<br>Undergraduate Commencement | 14                       |
| 15 | 16 | 17 | 18 | 19<br>School of Education Commencement | 20   | 21<br>Juneteenth holiday |
| 22 | 23 | 24 | 25 | 26                                     | 27   | 28                       |
| 29 | 30 |    |    |  |  |                          |

### July

| S  | M  | T  | W  | T  | F                             | S  |
|----|----|----|----|----|-------------------------------|----|
|    |    | 1  | 2  | 3  | 4<br>Independence Day holiday | 5  |
| 6  | 7  | 8  | 9  | 10 | 11                            | 12 |
| 13 | 14 | 15 | 16 | 17 | 18                            | 19 |
| 20 | 21 | 22 | 23 | 24 | 25                            | 26 |
| 27 | 28 | 29 | 30 | 31 |                               |    |

### August

| S  | M  | T  | W  | T  | F  | S                          |
|----|----|----|----|----|----|----------------------------|
|    |    |    |    |    | 1  | 2<br>Summer Session I ends |
| 3  | 4  | 5  | 6  | 7  | 8  | 9                          |
| 10 | 11 | 12 | 13 | 14 | 15 | 16                         |
| 17 | 18 | 19 | 20 | 21 | 22 | 23                         |
| 24 | 25 | 26 | 27 | 28 | 29 | 30                         |
| 31 |    |    |    |    |    |                            |

## Arts at UC Davis in the Year of the Eggheads

### Manetti Shrem Museum

Phillip Byrne, Beatriz Cortez, Kang Seung Lee, Candace Lin: *Entangled Writing Through Dec. 29*

*Light into Density: Abstract Encounters 1920s-1960s* | From the Collection of Jan Shrem and Mario Moretti Shrem  
Sept. 19-May 5

*Ritual Clay: Cathy Lu, Paz G, Maryam Yousef*  
Sept. 19-Dec. 29

Selections from the Fondazione Sandretto Rebaudengo (women artists)  
Jan. 23-June 23

Ruby Neri  
Jan. 23-May 5

Arts & Humanities Graduate Exhibition  
June 5-23  
manettishrem.org

### Gorman Museum of Native American Art

*Metaphor, Myth, & Politics: Art from Native Printmakers*  
Nov. 25-Dec. 15  
gormanmuseum.ucdavis.edu

### UC Davis Library

*Celebrating 30 Years of Eggheads*  
(Shields Library lobby)  
Through Nov. 22  
library.ucdavis.edu

### UC Davis Design Museum

*Sonic Horizons: A Sensory Immersive Video Installation*  
Oct. 1-Nov. 22  
arts.ucdavis.edu/design-museum-current-exhibitions

### Mondavi Center for the Performing Arts

Dozens of musical, speaking and dramatic events throughout the year including London Philharmonic, Oct. 9, an Evening with Britney Griner, Nov. 3  
mondaviarts.org

ucdavis.edu

Follow us: [f](#) [i](#) [@](#) [in](#) [t](#) [x](#) [v](#) @UCDavis

#UCDavisGrown

Additional commencement information, when available, will be posted at [commencement.ucdavis.edu](#).

For event information, visit [ucdavis.edu/calendar](#). All dates and events are subject to change.

Please recycle. Printed on recycled paper.